

Jon Rowland

The Journey so Far
A view of recent paintings

Exemplars of work.

December 2024

Painting for Pleasure

Every artist was first an amateur – ***Ralph Waldo Emerson***

I believe all painting and art should be uplifting for the viewer - ***Damien Hirst***

Art never expresses anything but itself - ***Oscar Wilde***

“Art enables us to find ourselves and lose ourselves at the same time.”
Thomas Merton

“Painting is easy when you don’t know how, but very difficult when you do”
Degas

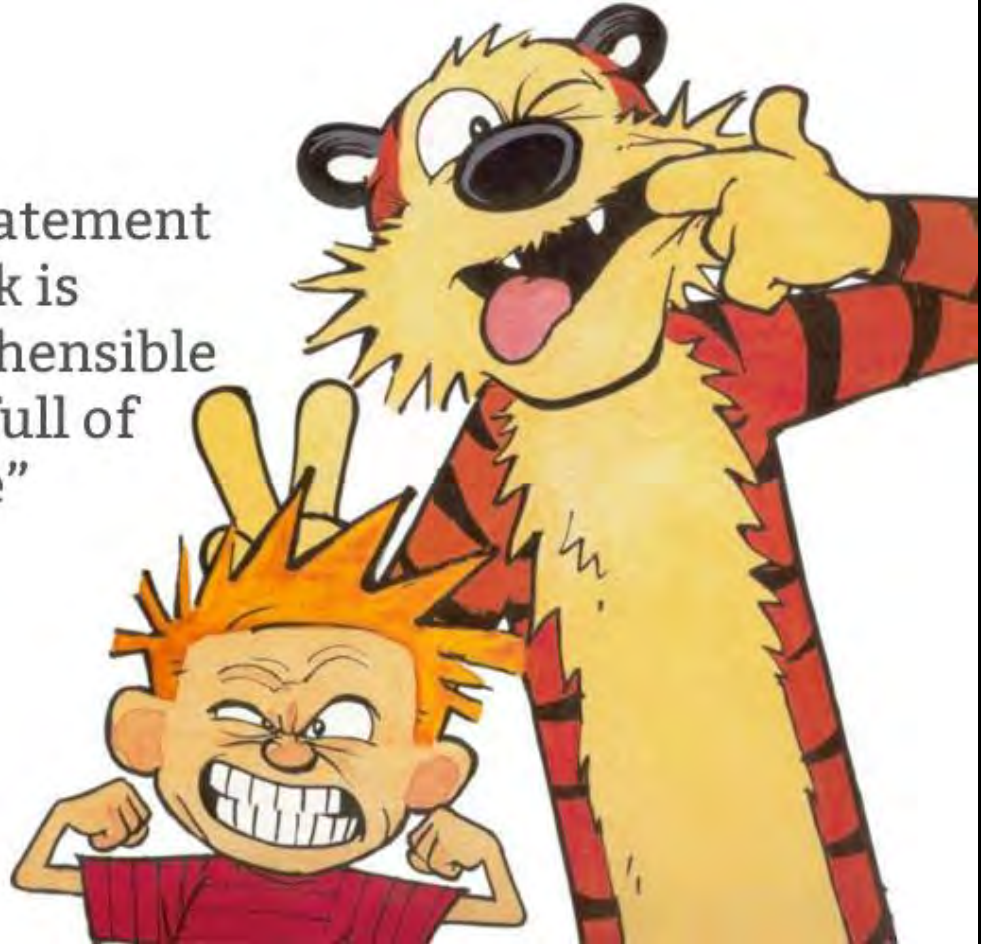
“Painting is just another way of keeping a diary.” ***Pablo Picasso***

Cezanne once said that painting from nature is not copying the object; it is realizing one's sensations. The complex process of drawing inspiration from these two sources, nature and emotion, has been my goal; and because much of my work is now studio bound, memory is a third attribute to the challenge that art provides.

Painting for Pleasure

“As my artist’s statement explains, my work is utterly incomprehensible and is therefore full of deep significance”

- Calvin



twistedsifter.com

Painting for Pleasure



Touching Distance #2

One of a series of paintings reflecting aspects of lockdown

Mixed media and collage on paper - 50cm x 70cm



Jon Rowland

Untitled - Exterior

One of a series of paintings reflecting aspects of lockdown

Mixed media and acrylic on paper –57cm x 76cm



Jon Rowland

Forest Glade

Mixed media and acrylic on paper –57cm x 76cm

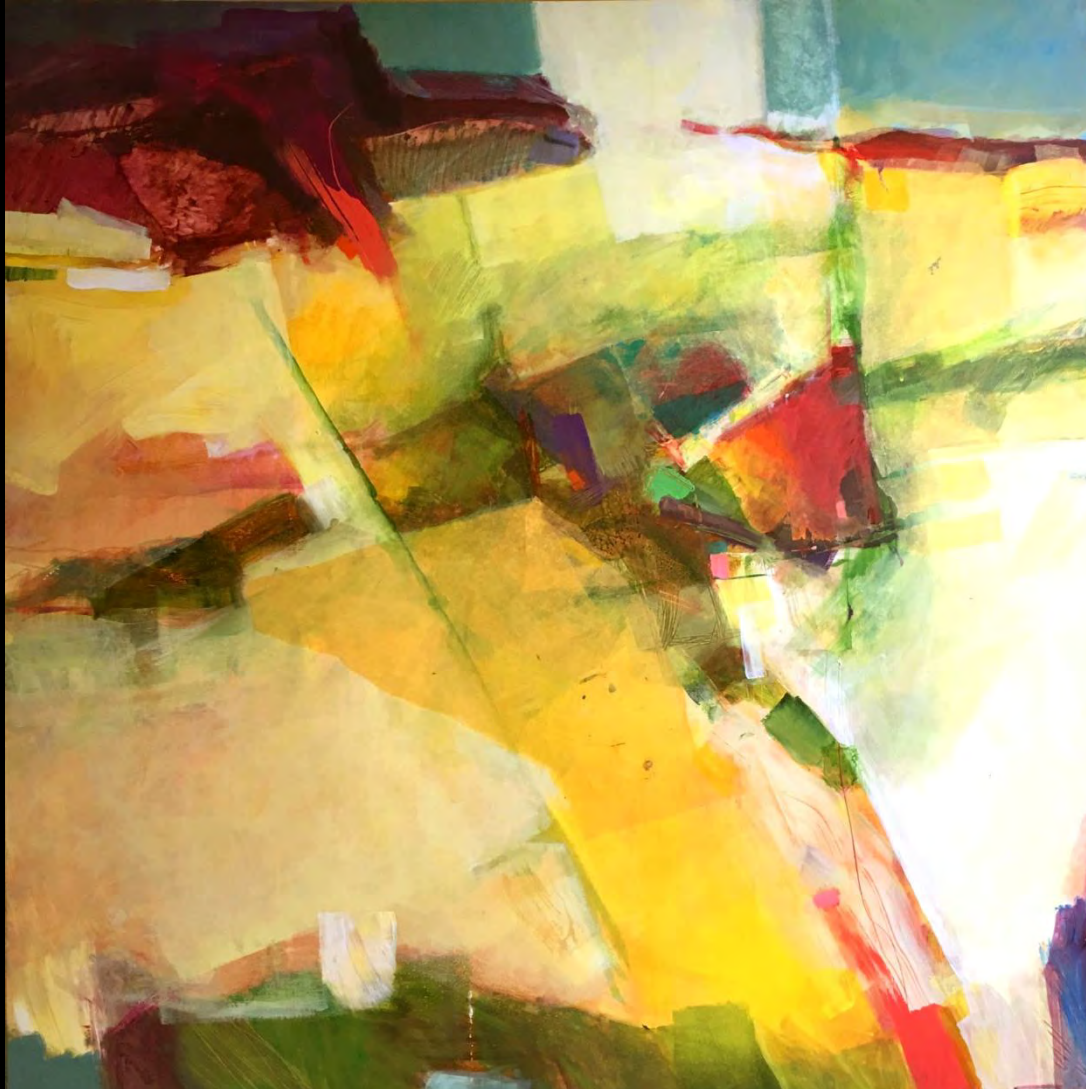


Jon Rowland

Siracusa - Untitled #5

One of a series of paintings reflecting the landscape of Sicily

Mixed media and collage on canvas – 100cm x 100cm



Jon Rowland

The Heat of Life

One of a series of paintings reflecting aspects of Lockdown

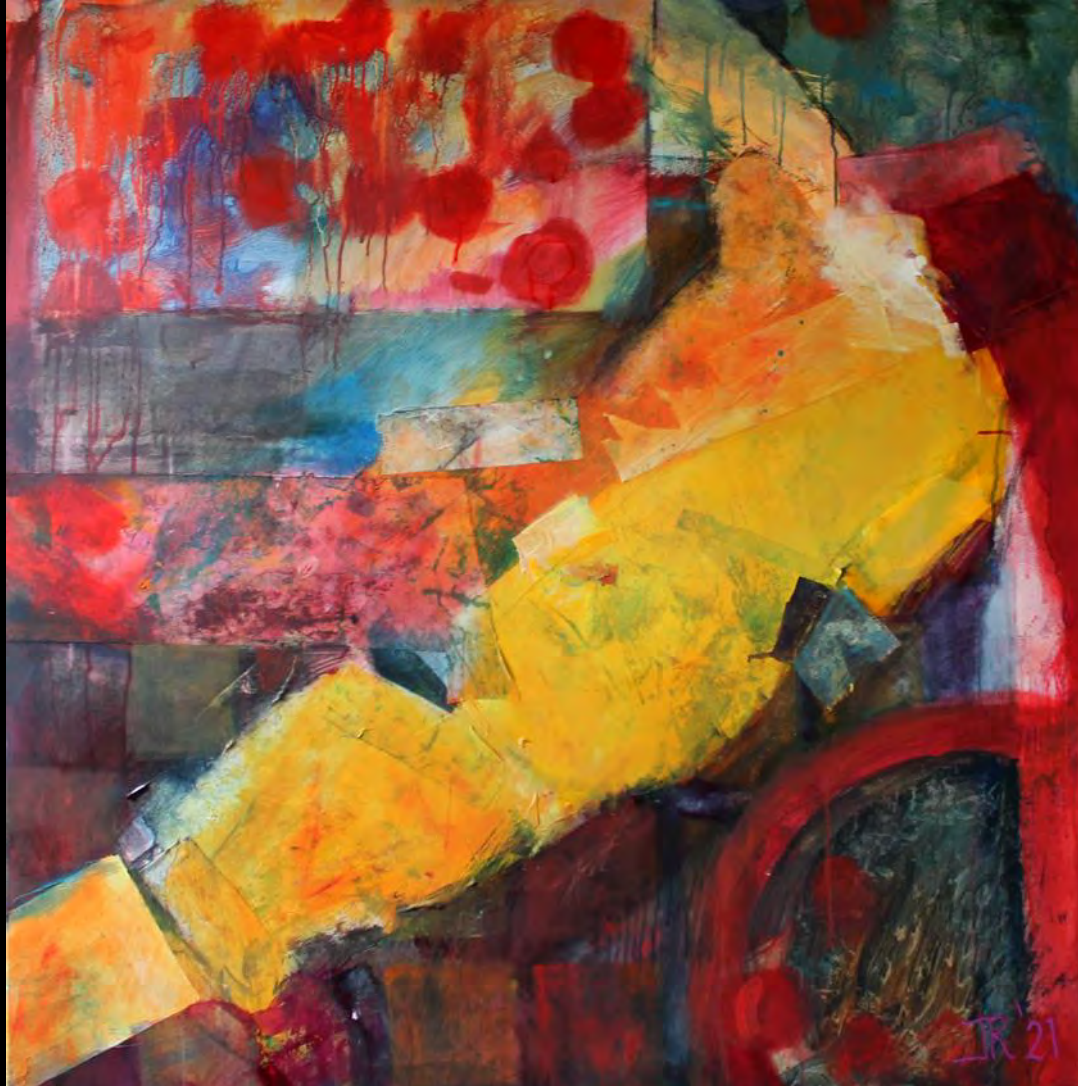
Mixed media and collage on board –60cm x 60cm



Jon Rowland

The Embrace - Interior

Mixed media and collage on canvas— 100cm x 100cm



Jon Rowland

Deep Shadows of Summer Hedgerows

Exploring our local landscape

Mixed media on canvas – 100cm x 100cm



Jon Rowland

Autumn Clints

Exploring the landscape of Scotland
Mixed media on canvas – 100cm x 100cm



Jon Rowland

Fear no More the Lightning Flash

Mixed media on canvas – 100cm x 100cm



Jon Rowland

Apologia

Acrylic and collage on board – framed 60cm x 40cm



Jon Rowland

Still life and plums

Acrylic and collage on board – framed 38cm x 40cm



Jon Rowland

Causeway

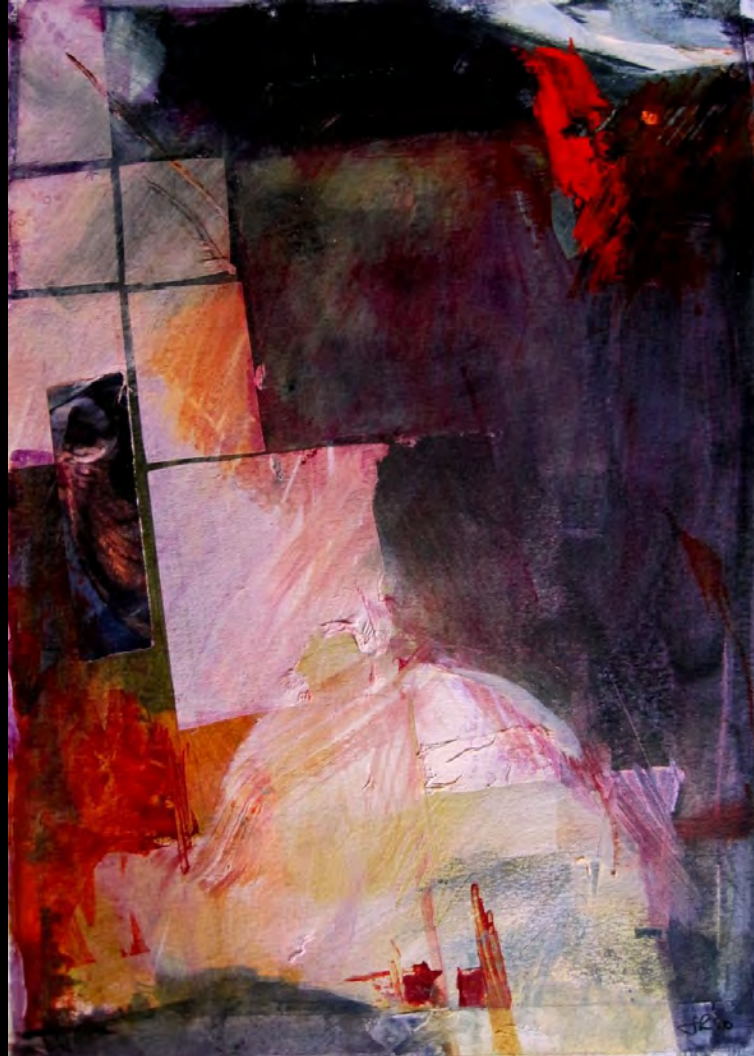
Acrylic on paper—framed 70cm x 50cm



Jon Rowland

Impress - Heartlands #5

Mixed media and collage on paper– framed 42cm x 30cm



Jon Rowland

Dancer Resting

Acrylic and oil on paper – framed 70cm x 50cm



Jon Rowland

Night Shore

One of a series of paintings reflecting the landscape of Scotland

Mixed media and collage on paper – unframed 60cm x 42cm



Jon Rowland

Harbour entry - Venice

Acrylic on paper – unframed 50cm x 75cm



Jon Rowland

Sunshine Shore - Scotland

Acrylic and oil on paper – framed 60cm x 42cm



Jon Rowland

Aftermath

Acrylic and oil on paper – framed 93cm x 64cm



Jon Rowland

Caught the Wind – Early Morning Coast

Two of a series of paintings reflecting the Devon Coast

Mixed media, ink and collage on paper – 25cm x 19cm



Black Tulip

Mixed media and collage on board - 38cm x 51cm

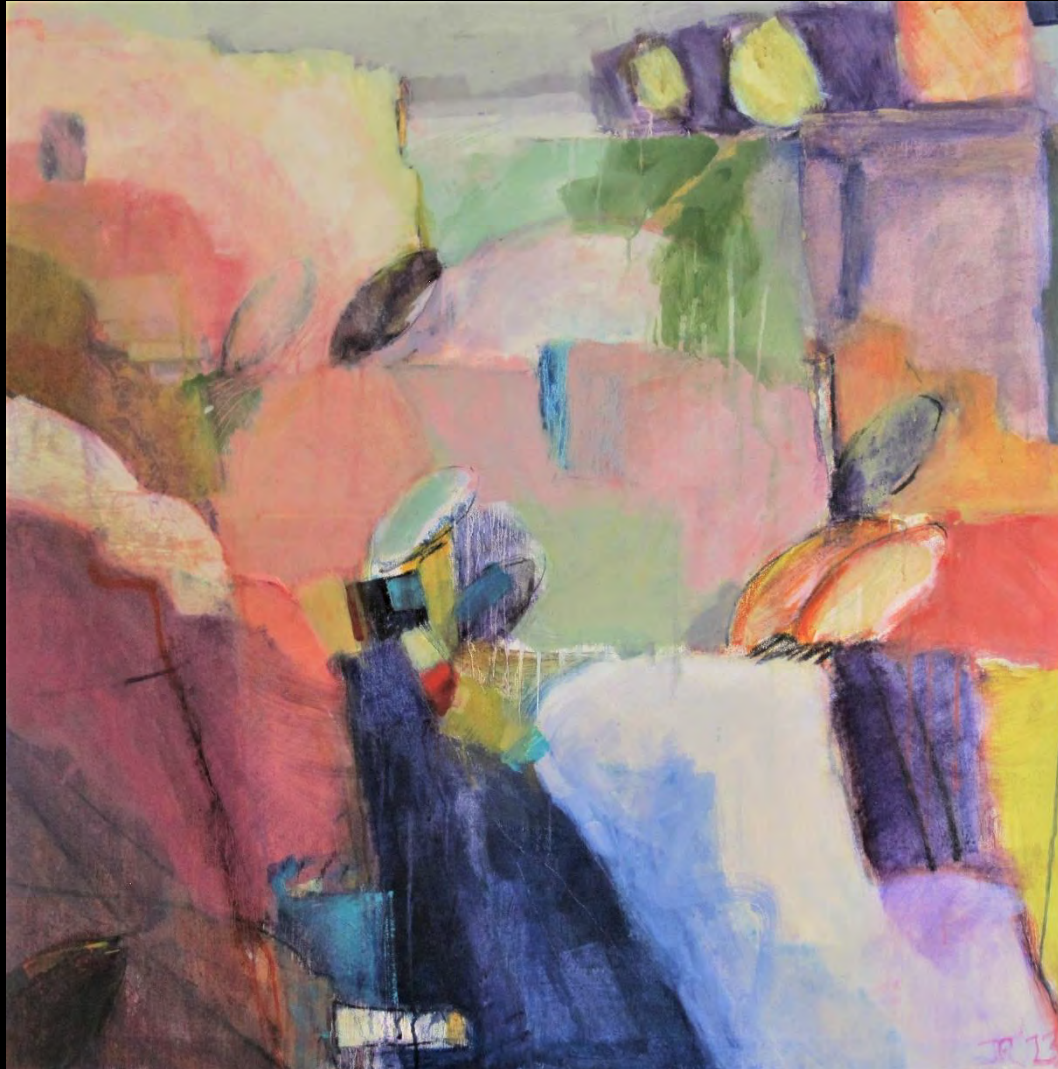


Jon Rowland

Bougainville #1 – Per me si va Nella Citta Dolente; City of Sorrow

One of a series of paintings exploring 'ancient space'

Acrylic, oil and mixed media on canvas – unframed 100cm x 100cm

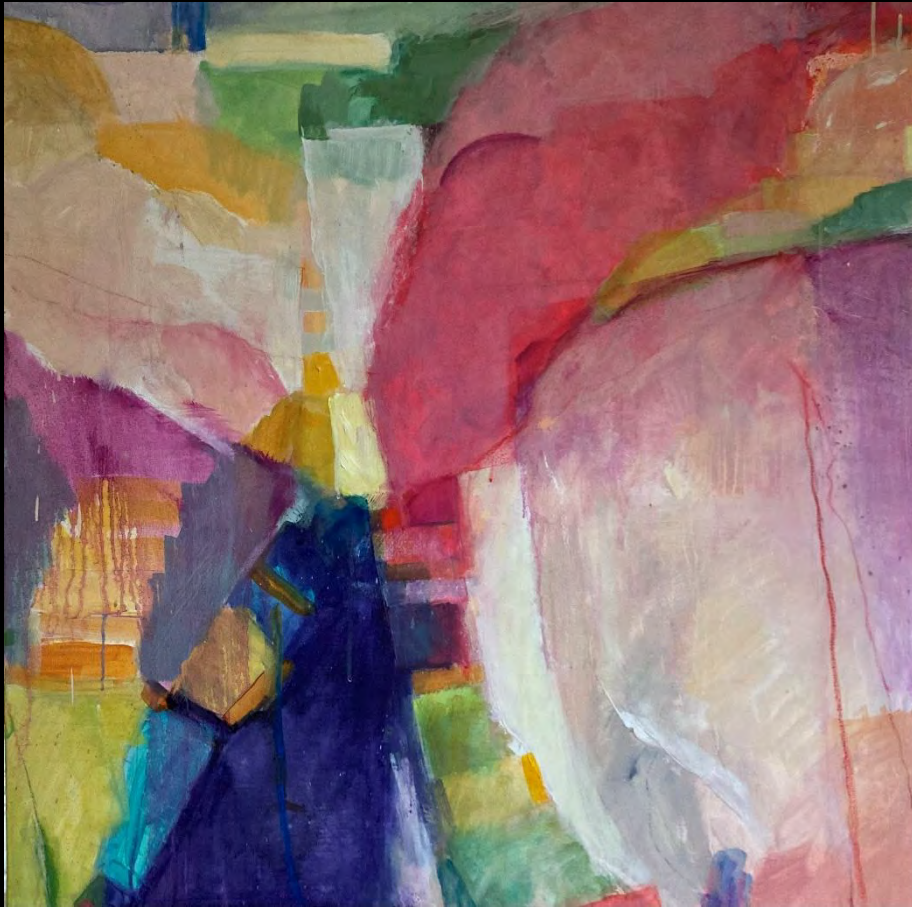


Jon Rowland

Bougainville #3 – Per me si va Nella Citta Dolente - City of Sorrow, and Passage

Reflections on ancient space

Acrylic, oil and mixed media on canvas – unframed 100cm x 100cm



Jon Rowland

Heat Wave

Acrylic, pastel and oil on paper – framed 93cm x 64cm

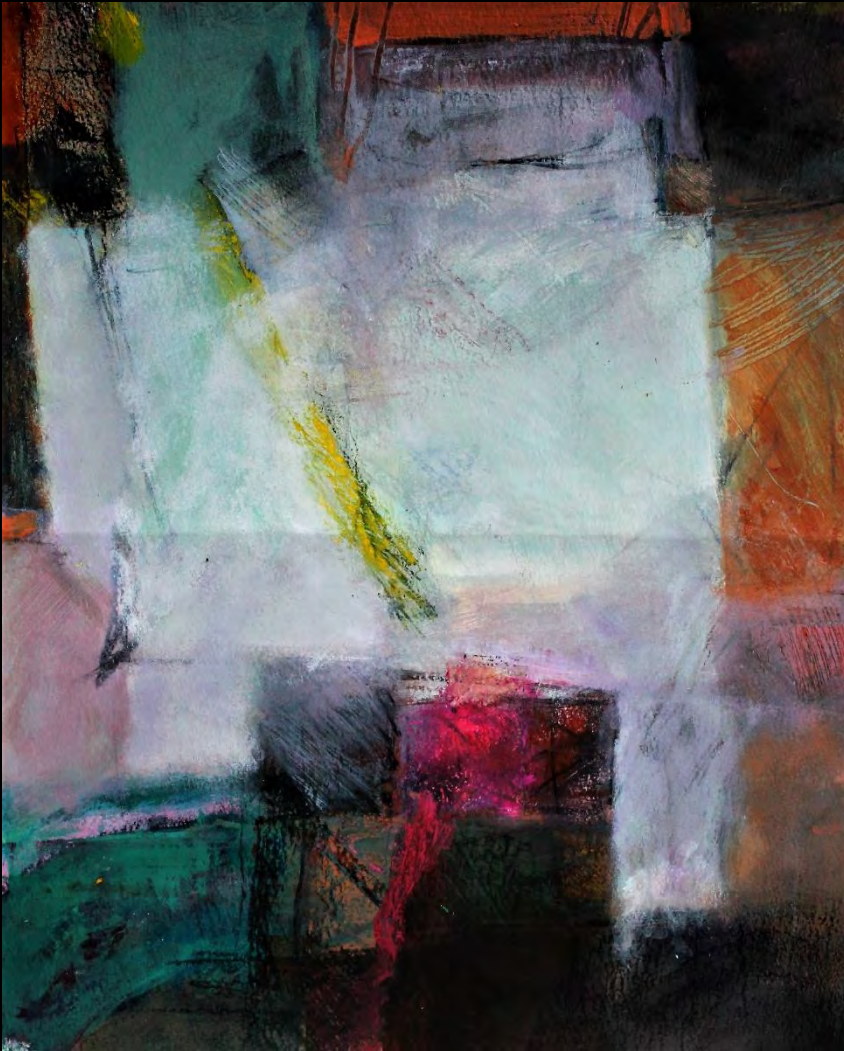


Jon Rowland

Sanctum and Tabernacle

Two paintings from a series reflecting ancient space

Acrylic, charcoal and oil on paper – unframed



Jon Rowland

Haven

One of a series of paintings reflecting the juxtaposition of ancient and natural space

Acrylic, oil mixed media on board – Framed 70cm x 50cm



Jon Rowland

Widening the River, Deepening the Cleugh

Acrylic on paper – framed 70cm x 50cm



Jon Rowland

Tree of Love

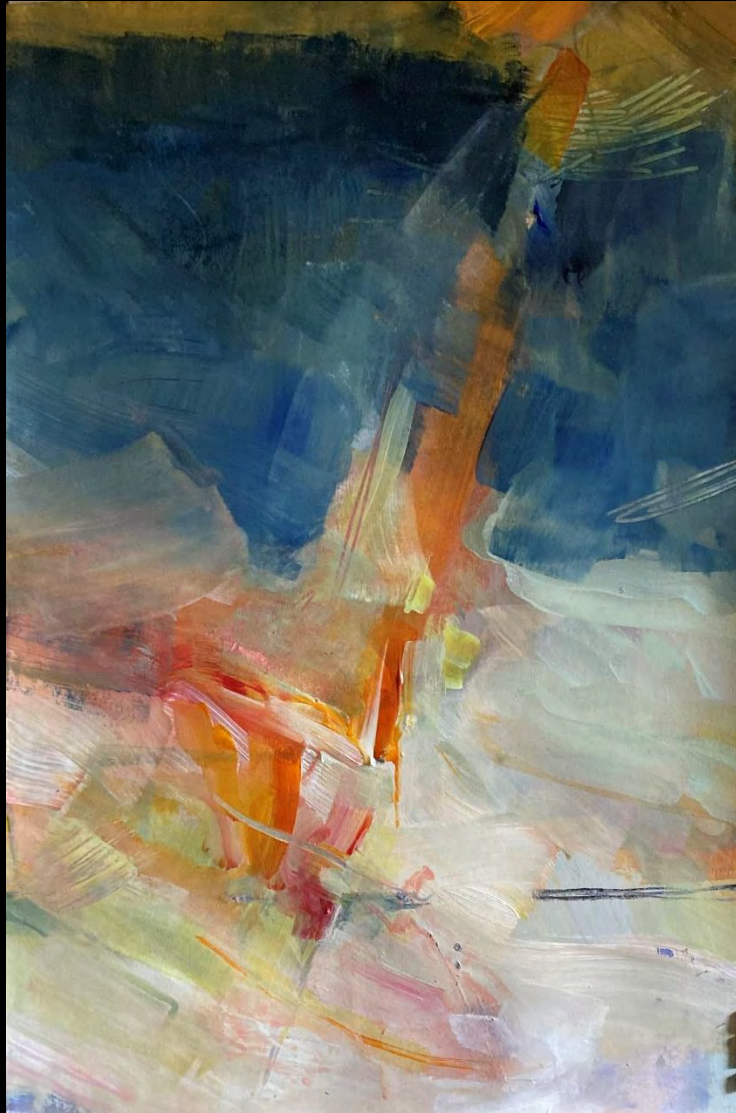
Acrylic, oil, and mixed media on canvas – unframed 100cm x 100cm



Jon Rowland

The Surfer

Acrylic on paper – Framed 42cm x 30cm



Jon Rowland

Cevenole #1 and #2

Reflections on the landscape of the Cevennes

Acrylic and oil on canvas – unframed 50cm x 50cm



The Wilder Shore of Love

Acrylic, oil and mixed media on canvas – unframed 120cm x 100cm



Jon Rowland

Maelstrom

Acrylic, collage and mixed media on board – unframed 38cm x 25.5cm



Jon Rowland

Matador

Acrylic, and charcoal on canvas – Unframed 80 x 80cm



Jon Rowland

Party

Acrylic, collage and charcoal – unframed 45cm x 64cm



Jon Rowland

In My Room – In My Head

Acrylic, oil and charcoal on paper– unframed 100cm x 70cm



Jon Rowland

Swell the Curled Waters

Oil on paper on Board— Framed 76 x 57cm



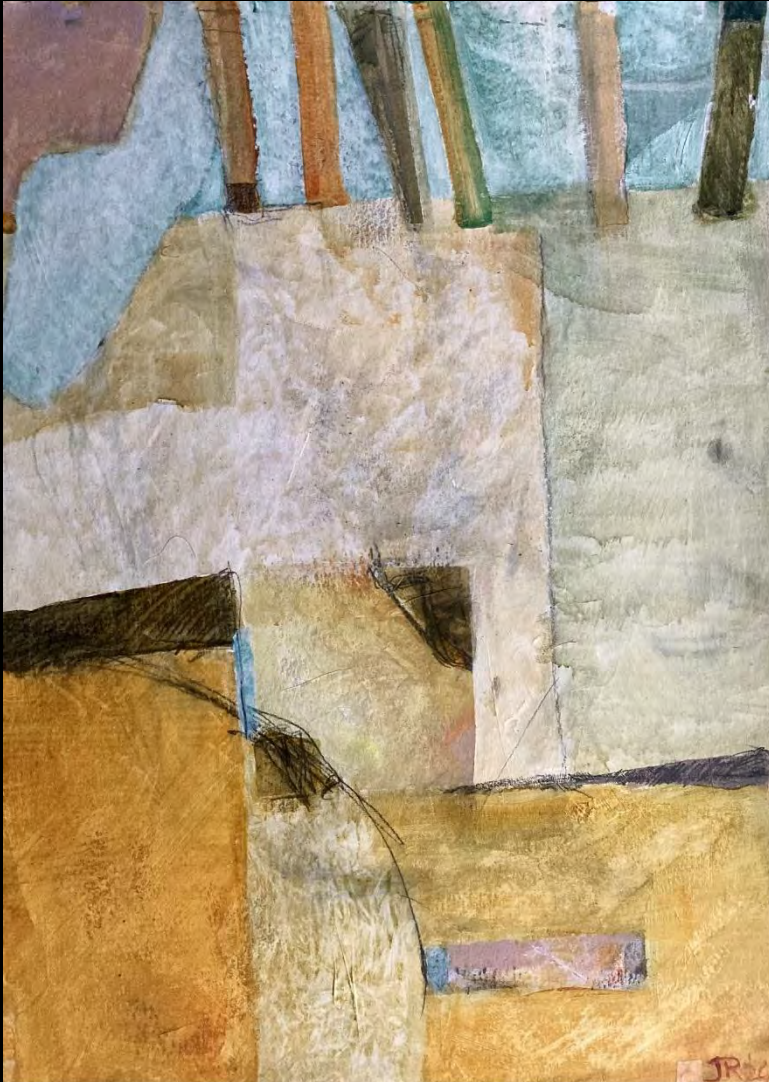
- Beached Boats

Acrylic on canvas – 70 x 100cm



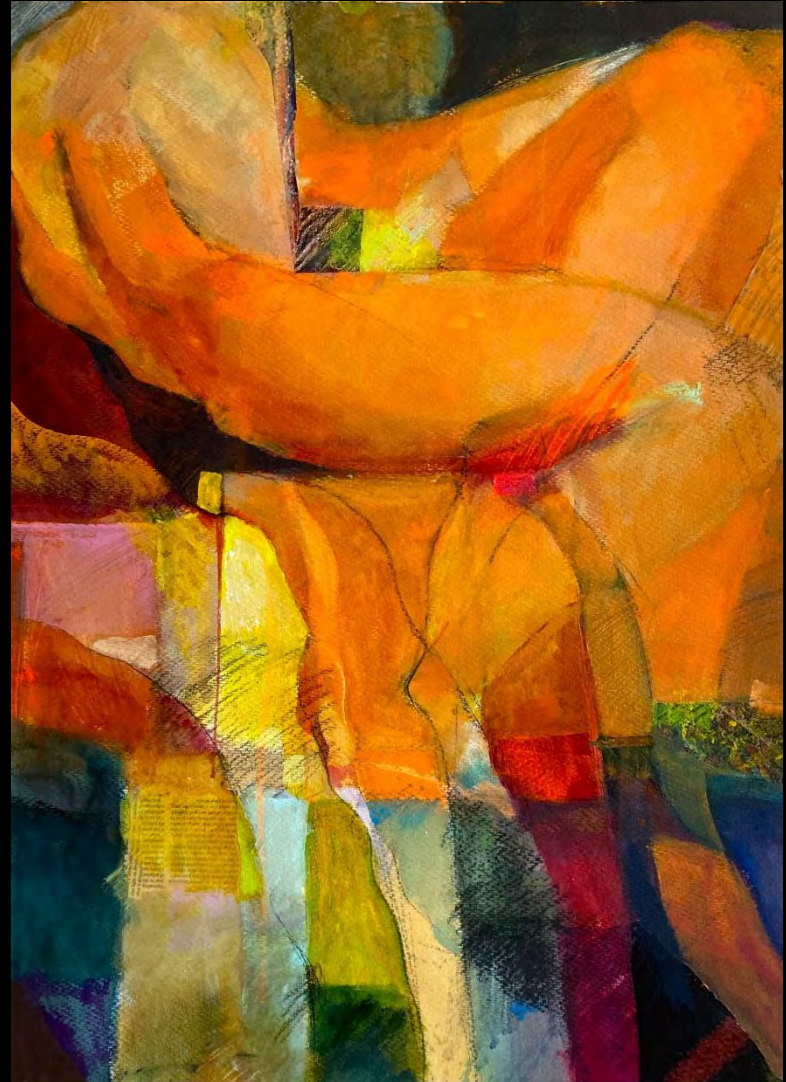
Foxcombe

Acrylic, and charcoal on paper – 84 x 59cm



Flaming Night

Mixed media, collage on paper 77cm x 57cm



Jon Rowland

A broad chronology of exhibitions

Linacre College Oxford - *Solo Exhibition*, c2001
Canal Street Studios, Oxford - *Group Exhibition*, c2003
Said Business School Gallery Oxford - *Solo Exhibition* , c2003
Berthold Gallery London - *Group Exhibition* 2005
Wolfson College, Oxford - Small Paintings - *Solo Exhibition* 2005
Said Business School Oxford - Places Spaces and Life - *Solo Exhibition* 2007
Wolfson College, Oxford - Coast to Coast - *Solo Exhibition* 2010
Swann Gallery, Woodstock - *Group Exhibition* 2010
Wolfson College - Oxford- An Exhibition of New Paintings - *Solo Exhibition* 2014
Darren Baker Gallery, London - *Group Exhibition* 2014
Battersea Art Fair London - Represented by Wychwood Art Gallery 2015
Wychwood Art Gallery, Deddington- *Group Exhibition* 2015
Sewell Centre Gallery Oxfordshire – The Colour of Place - *Solo Exhibition* 2016
Wolfson College, Oxford – And Life is Colour – *Solo Exhibition* 2018
Cornerstone Arts Centre Oxfordshire - Places and Spaces – *Solo Exhibition* 2019
Boiler Room Gallery, Jam Factory Oxford – Reflections in Colour - *Solo Exhibition* 2019
Barn Gallery, St John's College, Oxford – Touching Distance – *Solo Exhibition* 2021
The North Wall Arts Centre, Oxford – Heartlands – *Solo Exhibition* 2021
Sewell Centre Gallery Oxfordshire – Recollections of Place – *Solo exhibition* May 2022
Wolfson College Oxford – Ancient and Natural Spaces - *Solo Exhibition* 2023

www.jonrowlandart.co.uk

Jon Rowland

Turmoil

Acrylic, oil mixed media on canvas – framed



Jon Rowland

An abstract painting featuring a dynamic composition of thick, expressive brushstrokes. The color palette is rich and varied, including deep reds, vibrant blues, earthy greens, and warm yellows, all set against a background of lighter, textured washes. The strokes are layered and overlapping, creating a sense of depth and movement. The overall effect is one of raw energy and emotional intensity.

Thank you
jonrowlandart.co.uk